



Smart Financial DataHub

Enterprise Data Management Software for Financial Institutions



The smart solution to Financial industry challenges

- > Increase the **quality** of your data to reduce your operational risk and cost
- > Reduce **time to market** to access new data and speed up innovation
- > **Simplify** your information system
- > Ease the **integration** of new strategic business
- > **Reduce** the cost of your data by managing it better

The complete solution for centralized data management, **Smart Financial DataHub** offers a durable and high added value answer. **SFDH** acts as a hub, a repository and a user-oriented data management tool for data used or produced by financial institutions.

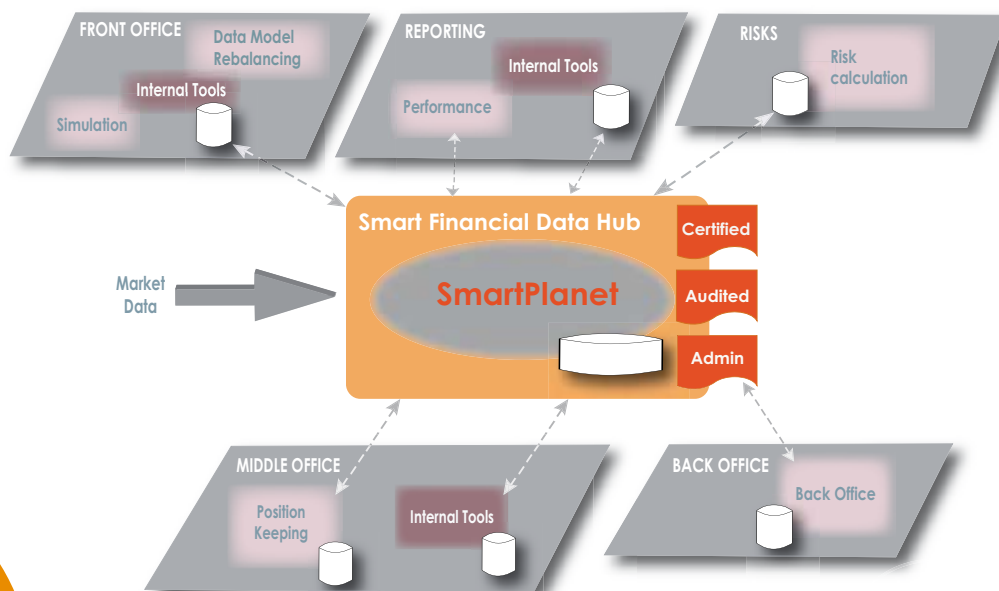
- **Security Master File:** The Security Master File, hosts every type of asset class and manages reference data as well as market data. **SFDH**, as part of the STP chain, receives information from as many different internal or external sources as required, cleans it, enhances it and distributes it to all departments and IT systems to make sure they all share the same data. The Security Master File comes with two comprehensive components:

- **Indices and Benchmarks Master File:** Manages the composition of market index securities as well as filtered and/or composite indices or benchmarks.
- **Corporate Action Management:** Enables the processing of corporate action execution. Monitoring of corporate actions and corporate events impact on reference and market data.

- **Business Entity Management:** Centralizes and consolidates all information about third parties with which the financial institution is directly or indirectly in business with. Offers a single enterprise view of business entities and the relationships between them (holding, customer/supplier relations, guarantees, etc.). Linked to the **Security Master File** for monitoring and mitigating credit and operational risks.

SFDH relies on our open and flexible technology. Leveraging **SmartPlanet** facilitates implementation and creation of other financial repositories such as:

- Product Master File
- Transactions and positions central repository
- Mutual Funds and Portfolio description
- Reference data tables (countries, currencies, markets)



Architecture & Features

Main Features

Upstream / Downstream Connectivity: Powerful EAI & ETL functions to retrieve and send information under any technical protocol (JMS, FTP, API, Webservice...) and any format (XML, XLS, CSV...). Complex mapping rules defined through a graphical engine.

Data Quality Controls: Parameters driven set up of quality controls among more than 30 different types available (format validation, date control, coherence of data, comparison between sources, comparison between dates...).

Business Process & Dataflow: SFDH includes a flexible dataflow engine, allowing full automation of all data processing taking into consideration all possible contexts.

Data Enhancement: Business rules with an intuitive scripting engine for automatic data enhancement. Connectivity to external calculation libraries by API/Webservice for advanced requirements.

Golden Copy Generation: Automatic generation of multiple-golden copies from multiple sources for multiple usages. Set up and building process tracking tool.

Data Modeling: Open data model, flexible and customizable by simple configuration. All screens/interfaces/functions automatically inherit changes made on it.

Intuitive User Interface: Rich and web-based thin client user interface. User screens configuration through GUI.

Reporting: Large set of reports with complex queries available on screens (user definable pivot tables and charts) and/or extraction files. Fully compatible with MS Excel.

Security & Audit: Advanced authorizations with 4 eyes validation rules. Tracking and Audit of all changes through the GUI.

Data Archiving & Purging: Easy datawarehousing with powerful archiving and purging facilities.

Security Master File:

- Reference data : attributes and definition
- Market data : prices, analytics, ratings, curves, volatility surfaces and time series
- Corporate actions and corporate events.

All asset classes management: Equities, Bonds, Commodities, Derivatives, Forex, Money Markets, Credit Derivatives, Structured Products, OTC, Indices and Benchmarks.

Business Entities:

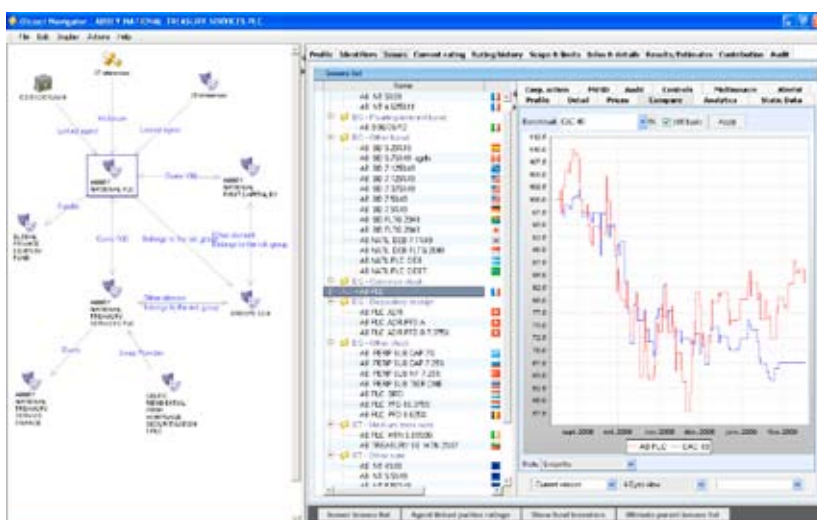
- Brokers
- Customers
- Counterparties
- Funders/Investors
- Guarantors
- Issuers
- Retail clients

Architecture

- > **SmartPlanet** Technology
- > Distributed, secure, optimized, real-time multi-tiers architecture
- > Available 24x7
- > Multiple sites and worldwide deployment
- > Supporting large data volumes
- > Full Java, compatible with all relational databases and operating systems
- > Web based thin client available

Standard Connectors

- > Bloomberg
- > Factset
- > Interactive data
- > Markit
- > Six Telekurs / Fininfo
- > Thomson / Reuters
- > And many others...



SmartCo

> Paris

37 rue de Liège
75008 Paris
T +33 (0)1 58 22 29 60
F +33 (0)1 58 22 20 50

> Boston

101 Federal Street, Suite 1600
Boston, MA 02110
T +1 617 342 7406
F +1 617 342 7415

info@smartco.com

www.smartco.com